

villa16
Roque del Conde



*"GIVING YOU THE KEYS
TO UNLOCK YOUR DREAM"*

villa16
Roque del Conde



villa16
Roque del Conde



villa16
Roque del Conde



UNIQUE LOCATION

VILLA16 IS A GROUP OF
16 EXCLUSIVE VILLAS TO BE
BUILT ON A PRIME LOCATION IN
THE SOUTH OF TENERIFE.

Located on the top of Roque Del Conde area, the villas enjoy breathtaking views over Costa Adeje. Each villa has been specially designed providing the living room, bedrooms, bathrooms, all the terraces and even the guestsuite with these spectacular views, while having the famous Roque Del Conde on the other side of the villa. This green scenery gives a feeling of peace and quiet whilst being only a few minutes away from the active centre.

villa16
Roque del Conde



ANDREAS
& PARTNERS
PLANNING
& ARCHITECTURE

villa16
Roque del Conde



PANORAMIC VIEWS & ABSOLUTE PRIVACY

AS THE LANDSCAPE IS
MAGNIFICENT, WE AGAIN OPTED
FOR A MINIMALISTIC AND TIMELESS
ARCHITECTURE WITH LOCAL
NATURAL FINISHINGS.

The floor to ceiling windows flood the villa with natural light and astonishing views. The villas offer complete privacy on all terraces and gardens.

Since the gardens and terraces play a main role in the concept of the house, we suggest several options. Different cosy terraces surrounded by plants or tropical gardens around the villa can be created on every level.

villa16
Roque del Conde



villa16
Roque del Conde

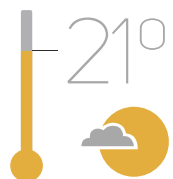


ETERNAL SPRING

The nickname of island 'the island of the eternal spring' comes from a microclimate that gives Tenerife a year average temperature of 21 °C and a humidity below 60 %. On top of that, it's only 4 hours away from all the major European cities.

The landscape is characterised by areas of pine forests, surreal volcanic plains, ancient laurel forests, dry badlands, deep ravines, sub-tropical valleys and of course the iconic volcano and Spain's highest peak, Mount Teide.

Madrid 2h. 50	Dublín 4h. 30	Manchester 4h. 45	Vienna 5h. 15
Barcelona 3h. 10	Frankfurt 4h. 50	Milán 4h. 35	Zurich 4h. 25
Berlín 5h. 15	Moscow 7h. 15	London 4h. 15	Brussels 4h. 25
París 4h. 15	Kiev 6h. 45		



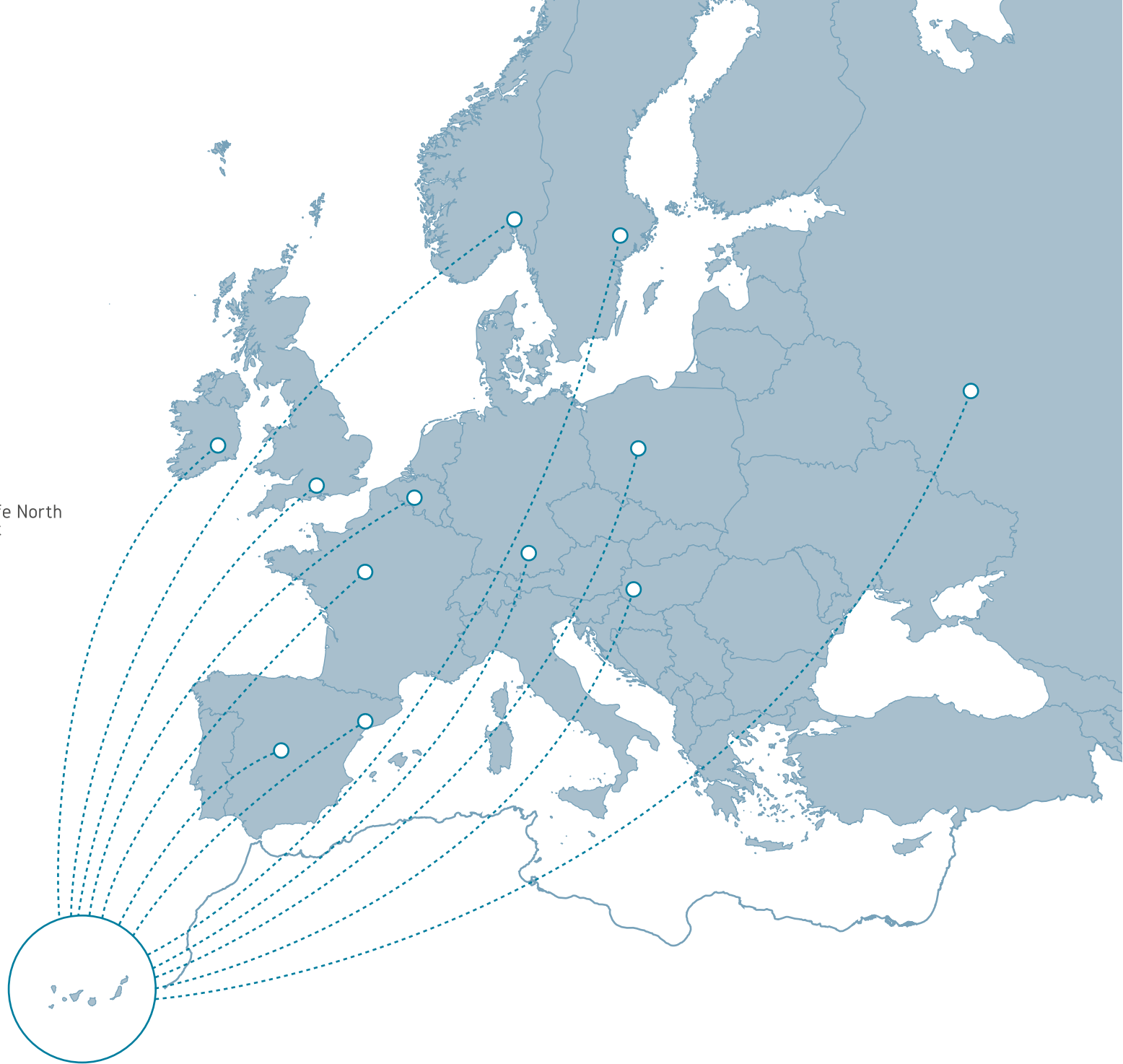
villa16
Roque del Conde

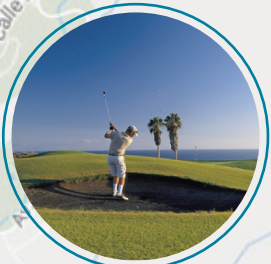


Tenerife North
Airport



Tenerife South
Airport





GOLF COSTA ADEJE



PLAYA BAHÍA DEL DUQUE



CC. PLAZA DEL DUQUE



PUERTO COLÓN



SIAM PARK



JUNGLE PARK



CC. SIAM MALL

villa16
Roque del Conde

villa16
Roque del Conde



SURROUNDINGS

WITH ROQUE DEL CONDE AS YOUR BACKYARD, YOU CAN TAKE A WALK ON THE SLOPES OF THIS MOUNTAIN RIGHT FROM YOUR VILLA,

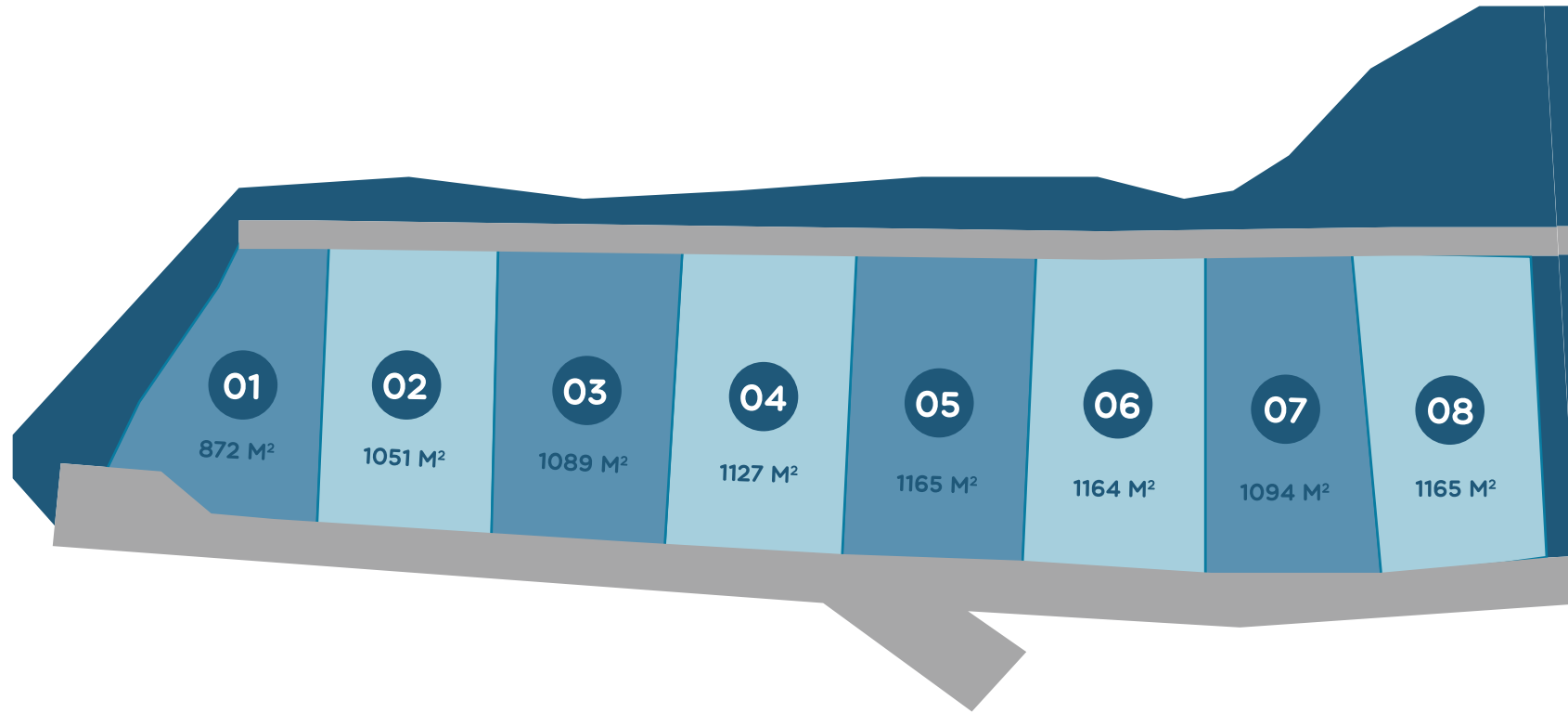
but if you feel like doing something different you can also enjoy shopping at Siam Mall, play golf at Costa Adeje Golf or a day by the beach at Playa del Duque.

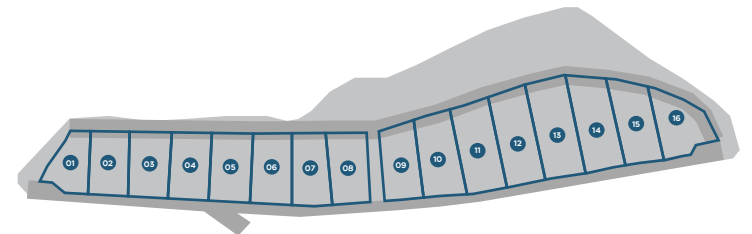
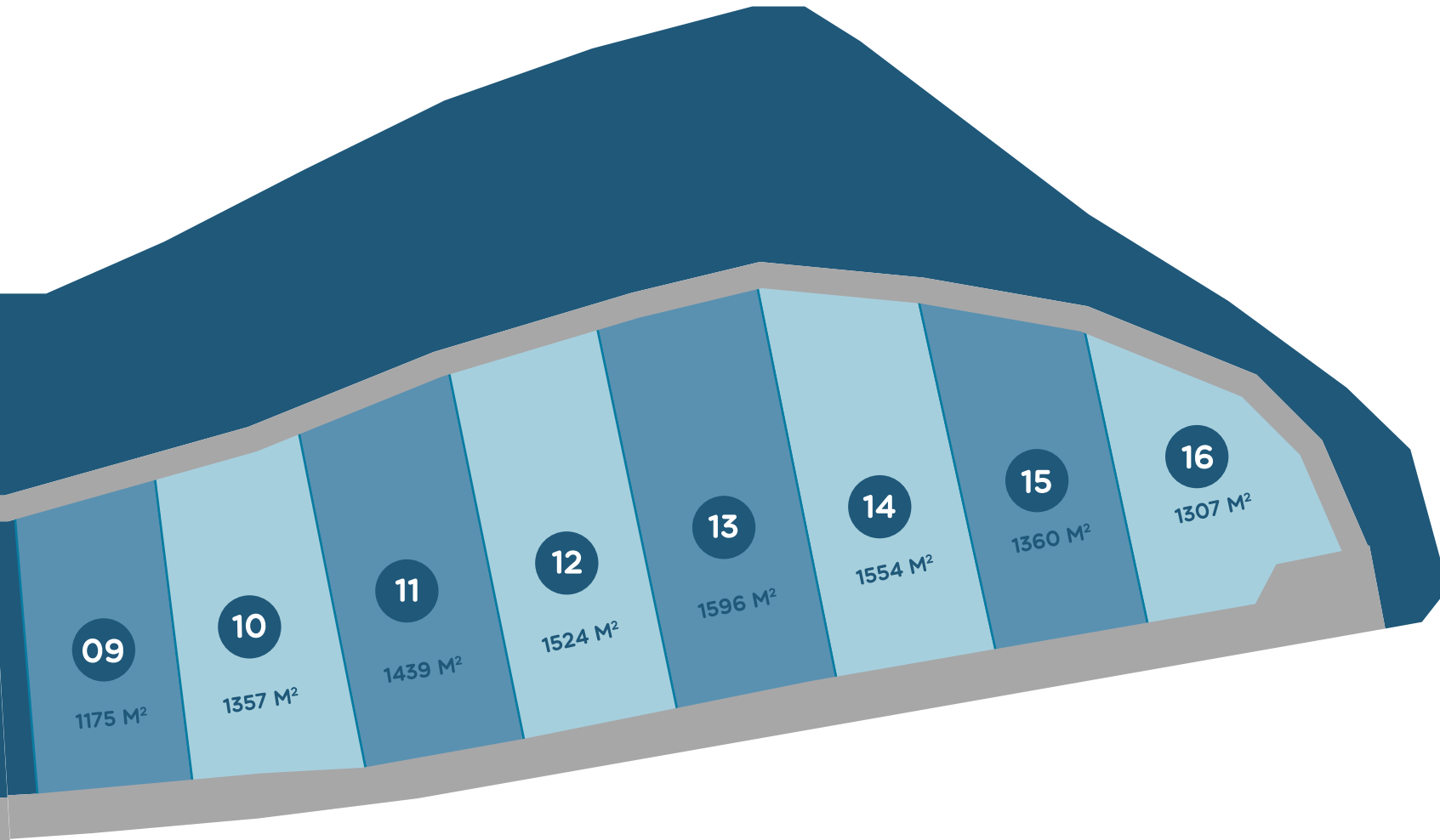
Having the bay at your feet, the possibilities are endless.

villa16
Roque del Conde



EACH VILLAS SITS ON ITS OWN
PRIVATE PLOT AND HAS
2,3,4 AND 5 BEDROOMS.





villa16
Roque del Conde



DETAILS OF THE VILLAS

THE 16 PLOTS RANGE FROM **1000 M² TO 1500 M²**, WHILE THE HOUSES' SURFACE AREA TAKES UP BETWEEN **180 AND 350 M²**.

The villas feature an eye-catching infinity pool and an open-plan furnished kitchen. There is also a secluded part of the villa with its own entrance for your guests, where they can enjoy the amazing views but also guarantee your privacy.

villa16
Roque del Conde



villa16
Roque del Conde



ANDREAS
& PARTNERS
PROPERTY
DEVELOPMENT





3 BEDROOMS MODEL PLAN

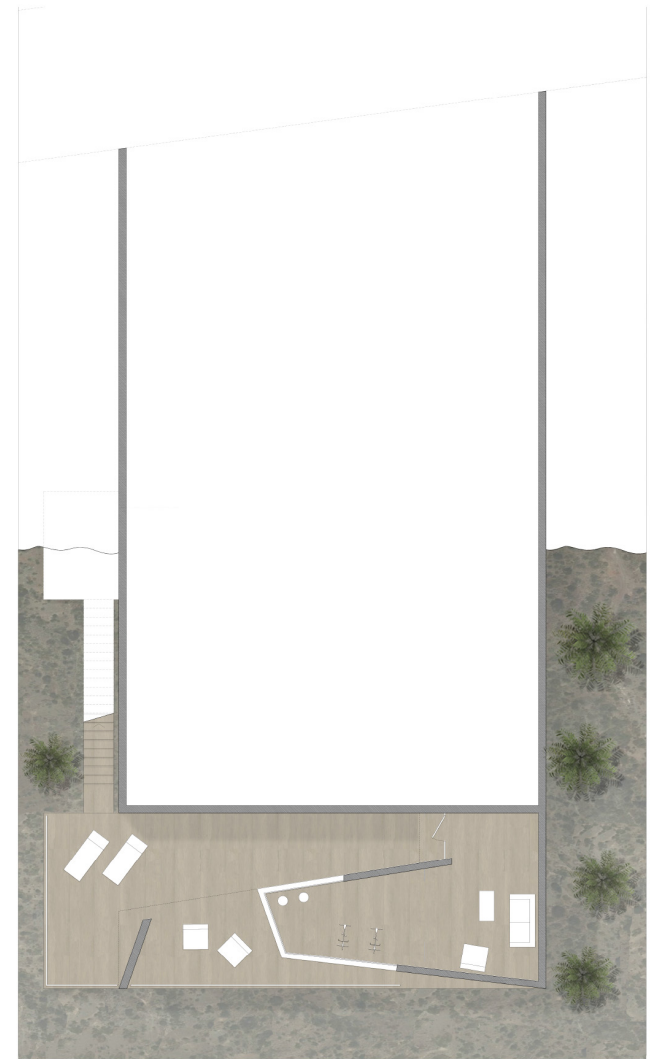
villa16
Roque del Conde



FIRST FLOOR



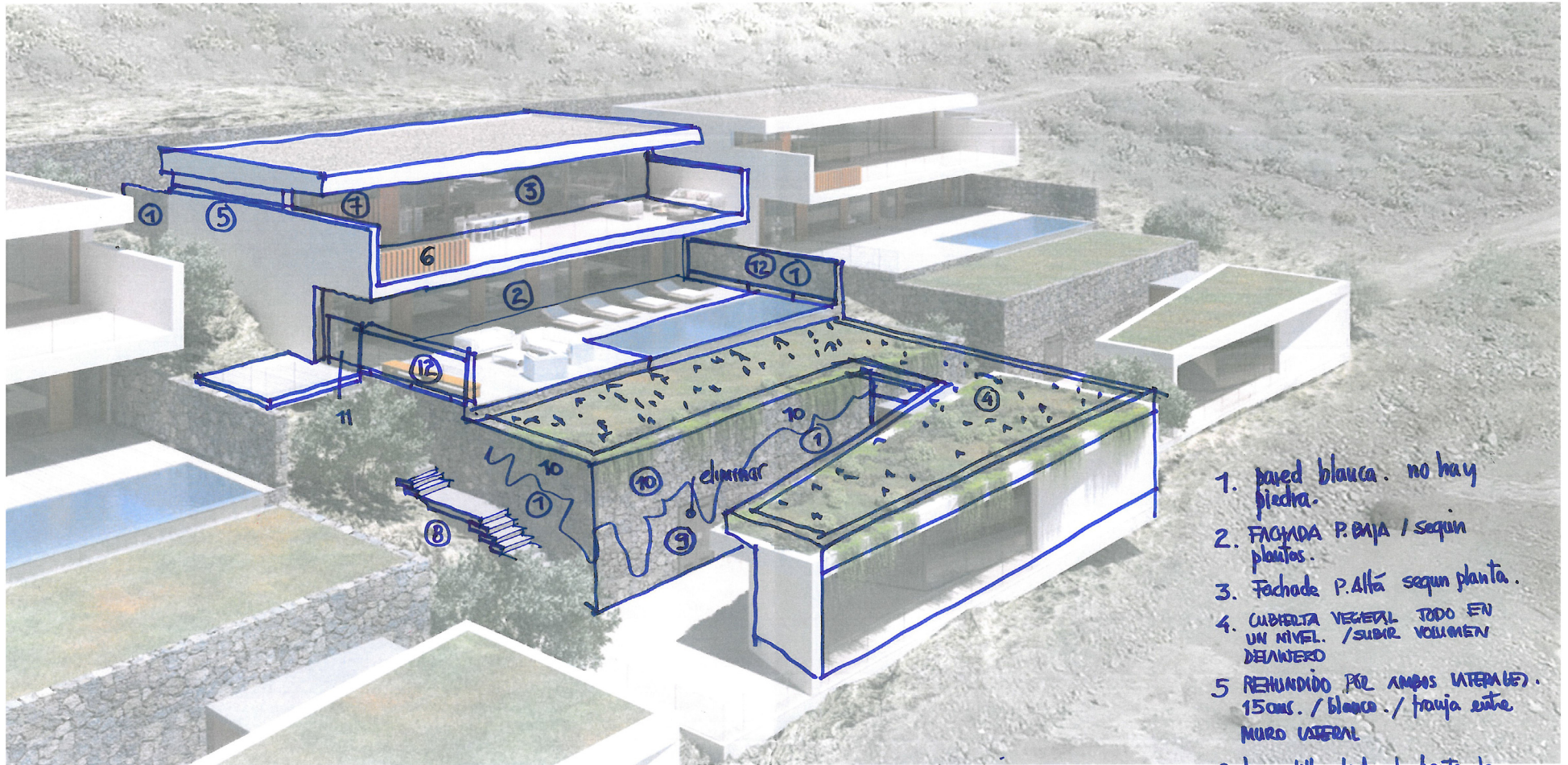
GROUND FLOOR



GUEST SUITE

We are open to any suggestions in order to adapt our design to your personal needs with our in-house architect and suppliers. This way, we will build the villa of your dreams.

villa16
Roque del Conde



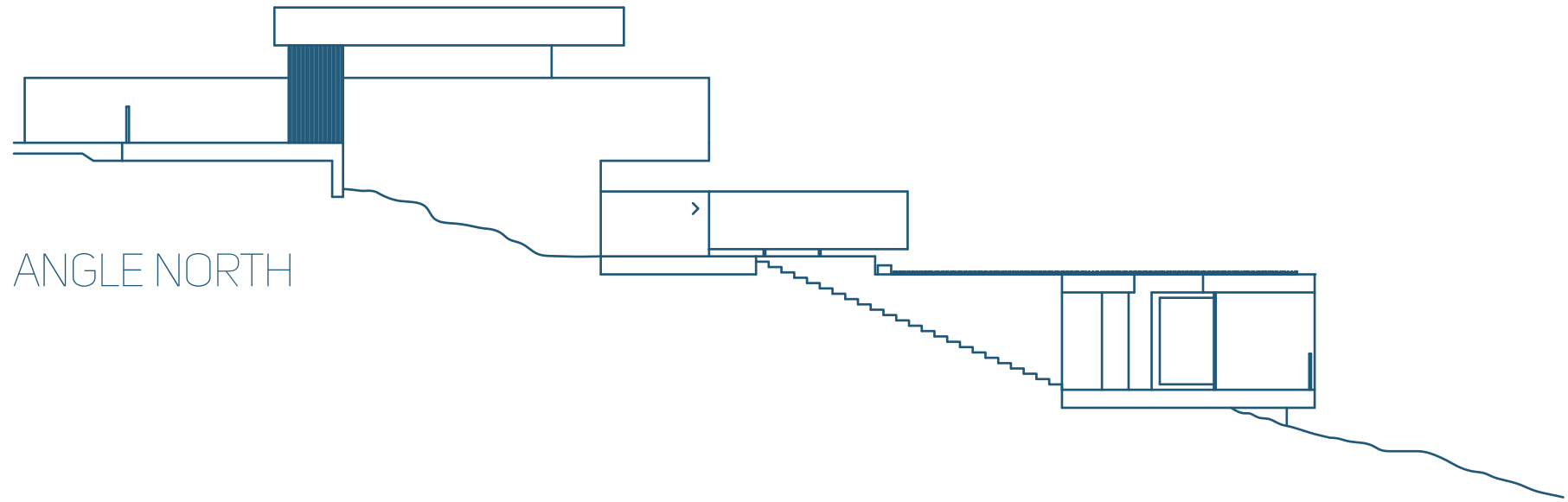
1. pared blanca. no hay piedra.
2. Fachada P.Baja / según plantas.
3. Fachada P.Alta según planta.
4. CUBIERTA VEGETAL TODO EN UN NIVEL. / SUBIR VOLÚMEN DELANTERO
5. REHUNDIDO POR AMBOS LATERALES. 15cms. / blanco. / franja entre MURO LATERAL
6. barandilla todo el frente de vidrio
7. LAMAS MADERA HASTA TECHO VER ALZADOS / PLANTAS.

11. PARED BLANCA / CORREDERA
12. MURO BLANCO. H: 1.80 VER ALZADOS /

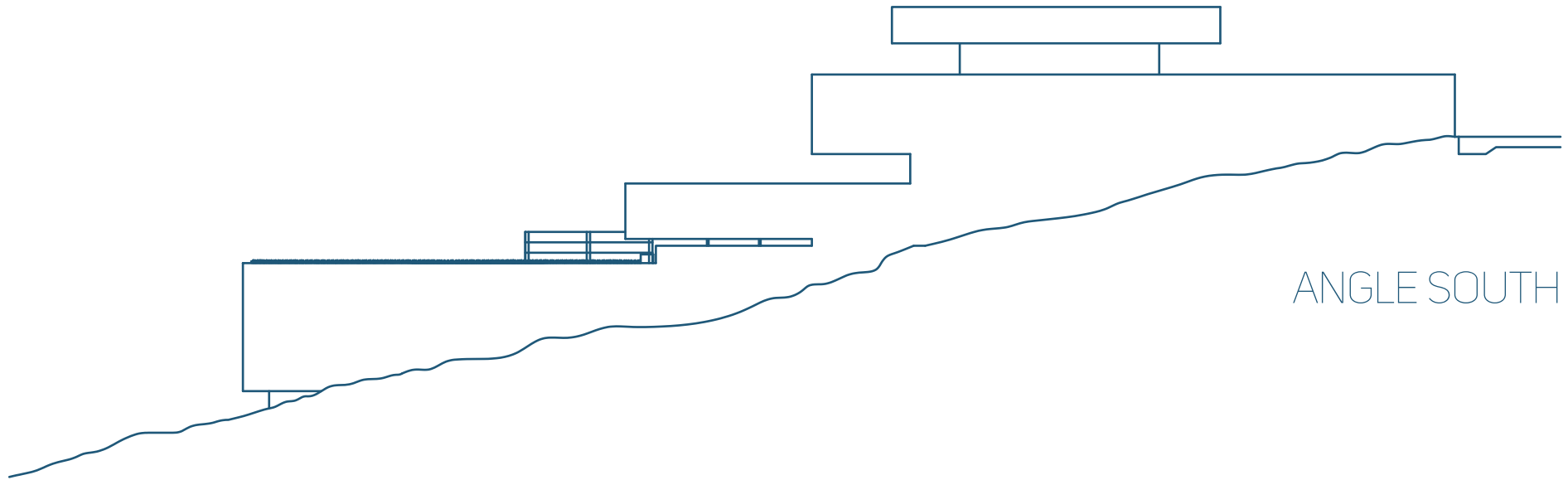
8. DIBUJAR ESCANERA EXTERIOR CON PEDANOS DE PIEDRA
9. ELIMINAR PUERTAS.
- 10 poner + vegetación adelante en MURO. / PATIO INFERIOR



villa16
Roque del Conde



ANGLE NORTH





FIRST FLOOR
3 BEDROOMS MODEL

villa16
Roque del Conde



ANDREAS
& PARTNERS
PROPERTY
DEVELOPMENT



villa16
Roque del Conde



ANDREAS
& PARTNERS
PROPERTY
DEVELOPMENT



villa16
Roque del Conde



ANDREAS
& PARTNERS
PROPERTY
DEVELOPMENT



villa16
Roque del Conde



GROUND FLOOR
3 BEDROOMS MODEL

villa16
Roque del Conde



ANDREAS
& PARTNERS
PROPERTY
DEVELOPMENT



villa16
Roque del Conde



villa16
Roque del Conde



ANDREAS
& PARTNERS
PROPERTY
DEVELOPMENT



villa16
Roque del Conde



VILLAS THAT STAND THE TEST OF TIME

WE USE SIMILAR MATERIALS AS WE DID IN OUR BAOBAB SUITES DEVELOPMENTS, WHERE INTENSIVE USE AND MAINTENANCE ARE VERY IMPORTANT. COMBINING THIS EXPERIENCE WITH GOOD TASTE AND ARCHITECTURE, WE WILL BUILD A HOUSE TO STAND THE TEST OF TIME, WITH ALL COMFORT AND BEST EQUIPMENT.

villa16
Roque del Conde



villa16
Roque del Conde



BY IMPLEMENTING
LOCAL MATERIALS
AND MODERN ENERGY
SAVING TECHNIQUES,
OUR CONSTRUCTION
IS RESPECTFUL TO THE
ENVIRONMENT AND
DESERVES OUR GREEN
LABEL.



villa16
Roque del Conde



EXCLUSIVE ACCESS

A private lane monitored by cameras is the only and exclusive access to the villas, which makes them extremely secure. Nothing will escape the eye of the cameras and this can be monitored through your smartphone.





YOUR HOME,
OUR WORLD.



FOR MORE INFORMATION:

COSTA ADEJE

Office Terrazas del Duque: (+34) **922 715 591** | Office C.C. Plaza del Duque: (+34) **922 718 193**

LA CALETA

Office Magnolia Golf Resort: (+34) **922 168 600** | Office Jardín La Caleta: (+34) **922 168 058**

PALM-MAR

Office Terrazas del Faro: (+34) **922 748 006**

BAOBAB SUITES

General Information (+34) **628 608 469**
commercialdirector@secondhometenerife.com
www.secondhometenerife.com



villa16
Roque del Conde



ANDREAS & PARTNERS
PROPERTY DEVELOPMENT